

This manual is for reference and historical purposes, all rights reserved.

This page is copyright© by M. Butkus, NJ.

This page may not be sold or distributed without the expressed permission of the producer

I have no connection with any camera company

On-line camera manual library

This is the full text and images from the manual. This may take 3 full minutes for the PDF file to download.

If you find this manual useful, how about a donation of \$3 to: M. Butkus, 29 Lake Ave., High Bridge, NJ 08829-1701 and send your e-mail address so I can thank you. Most other places would charge you \$7.50 for a electronic copy or \$18.00 for a hard to read Xerox copy.

This will allow me to continue to buy new manuals and pay their shipping costs.

It'll make you feel better, won't it?

**If you use Pay Pal or wish to use your credit card,
click on the secure site on my main page.**



Voigtlander

THE HUBER ART CO.
124 W. 7th St.

A CENTURY AND THREE QUARTERS OF PROGRESS

... and what it means to you?

IT is a far cry from the leisurely times of 1756 to the fast moving days of 1931. There has been more achieved, more changes, more development during this period of a century and three quarters, than ever before, in the history of the world.

The firm of Voigtländer has kept in step with time – it has consistently progressed and developed from those far off days of 1756, till to-day its organisation is world-wide and its products among the finest procurable.

Such a record of progress is unique – and not only that but of great import to the camera user – for it means that there is a very substantial background behind every Voigtländer product, and then there is the Voigtländer reputation – a reputation for quality coupled with value – a reputation worthily won and not to be lightly lost.

You are safe – and certain – when you buy photographic goods bearing the name of Voigtländer. You know that the immense organisation and modern methods make the prices as reasonable as possible – you know the pride that Voigtländer take in their products will allow of nothing less than perfection. Always buy Voigtländer – and you buy in Confidence.

Voigtländer

First in 1756: First To-day.

Every effort has been made to ensure the accuracy of all the particulars appearing in this list, but slight alterations may take place from time to time, and such differences from the catalogue descriptions cannot be admitted as cause for complaint.

Voigtländer

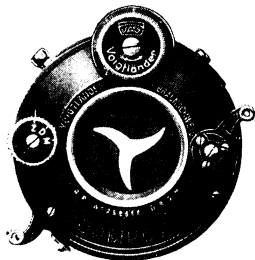
THE FAMOUS VOIGTLÄNDER LENSES

Since 1840, when Voigtländer produced the first real rapid photographic lens, (the well known Petzval lens F/3.7), every advancement of optical and technical science has been brought into service not only to maintain but even to raise the standard until to-day's world-wide reputation of the famous Voigtländer lenses has been attained.

As all Voigtländer anastigmats are guaranteed the choice of a lens, having been a mere question of chance, has become a matter of certainty. When you own a Voigtländer you may be sure of getting crisp sparkling negatives, sharp right up to the corners. And this is what you want, isn't it?

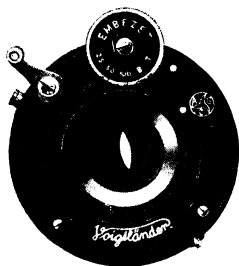
Voigtländer lenses being made in one quality only—Voigtländer-quality—the various types though differing in price are different only in character and speed but not in quality.

The instructive illustrations on the opposite page of all Voigtländer lenses will give you an idea of the different apertures while the speed is indicated by the relative time of exposure on a basis of one second at F/6.3. The structure of the optical system will be seen in the centre of the illustrations.



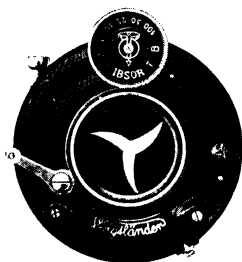
COMPUR A

THE SHUTTERS FITTED TO VOIGTLÄNDER CAMERAS



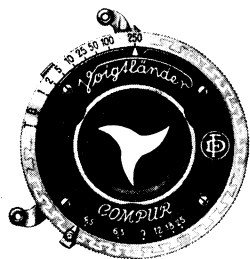
EMBEZET

This is a well made everest shutter providing three instantaneous speeds of $\frac{1}{25}$ th, $\frac{1}{50}$ th and $\frac{1}{100}$ th of a second, in addition to Time and Bulb movements. Although only fitted to the cheaper models, it is in every way reliable.



IBSOR

This shutter is controlled by a gear escapement movement and provides speeds of 1, $\frac{1}{2}$, $\frac{1}{5}$, $\frac{1}{10}$, $\frac{1}{25}$, $\frac{1}{50}$, $\frac{1}{100}$ th of a second ($\frac{1}{125}$ th in the smaller sizes) and Time and Bulb movements.



COMPUR B

A: with speed adjustment by dial.
B: with speed adjustment by ring.

The reliable clock work shutter. Accurate speeds, controlled by a gear escapement, of 1, $\frac{1}{2}$, $\frac{1}{5}$, $\frac{1}{10}$, $\frac{1}{25}$, $\frac{1}{50}$, $\frac{1}{100}$, and $\frac{1}{200}$, $\frac{1}{250}$, or $\frac{1}{300}$ th second, according to size

Note: The model is also supplied combined with self-timer, by which the person operating the camera may take his own photograph, as the shutter can be set to release 12 to 15 seconds after.



1 second
Voigtar F/6.3
3 lens Anastigmat

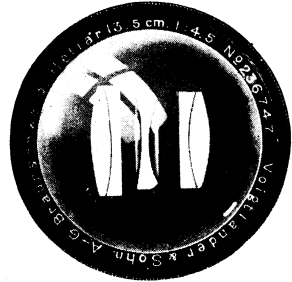


1 second
Collinear F/6.3
6 lens Double-Anastigmat



1/2 second
Skopar F/4.5
4 lens Anastigmat

**Voigtlander
Anastigmat lenses**
in actual size
for 5 1/4" (13,5 cm) focus
F/6.3 – F/3.5



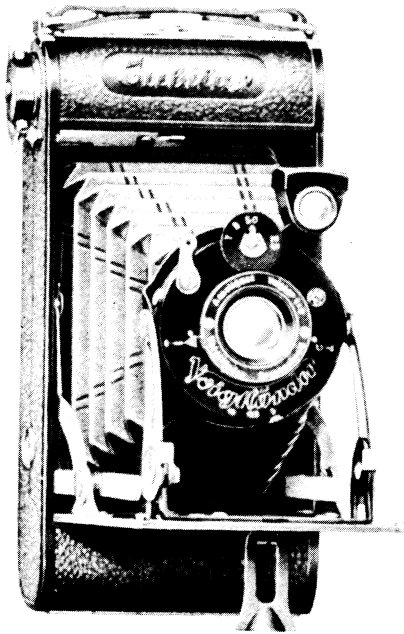
1/2 second
Heliar F/4.5
5 lens Anastigmat



Heliar F/3.5
5 lens Anastigmat
1/8 second

Small air bubbles are no reason for complaint but furnish proof, of the good quality of glass used which, contrary to the ordinary flint or crown glass, cannot be manufactured free of bubbles in perfect optical quality. These small bubbles do not impair the good definition of the lenses in any way and the loss of light even under the most unfavourable conditions is only 1/5000th, so that taken practically, it is of no importance.





Jubilar

The Simple to use Camera

3¹/₄" × 2¹/₄" size

THE VOIGTLÄNDER JUBILAR CAMERA FOR ROLL FILMS

The "Jubilar" camera which is the lowest price camera in the Voigtlander line is unquestionably a remarkable camera. It is constructed in a very simple and efficient way. This camera is presented to the public to fill a want of a small camera well made compact and durable at a moderate price. No other 2¹/₄" × 3¹/₂" camera fitted with an Anastigmat lens is sold at such a low price.

Automatic erection of the front standard is one of the features which makes the camera useable instantly.

The camera fitted with an F/9 Anastigmat lens and a shutter which is exceedingly simple gives you a time and bulb exposure as well as one 25th and one 50th of a second.

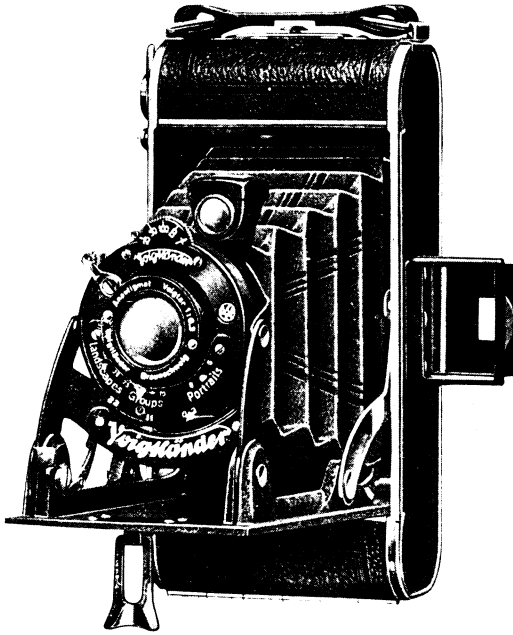
The weight of the camera is: 1 lb. ¹/₆ oz.

Dimensions are: 5³/₄" × 2⁷/₈" × 1¹/₄" (14,6 × 7,3 × 3,3 cm)

	Price \$
Jubilar camera	11.—

USEFUL ACCESSORIES:

Finder magnifier No. 5	1.—
Filter α or β	2.—
Portrait attachment No. 59	2.—
Case with shoulder strap	2.—



Bessa

The Snapshot Camera

THE VOIGTLÄNDER BESSA CAMERA

FOR ROLL FILMS

is the last word in automatic camera proficiency. It is the ideal snapshot camera, so light and compact and yet so strong that it can be subjected to the hardest usage. It is so simple, with one movement the camera is ready, a light pressure on the shutter release and the exposure is made. The clever "Three Point" focussing makes "fuzzy" pictures a thing of the past; mistakes are impossible, it is so simple, see for yourself:



Voigtlander

No more guessing and not only "Near" and "Distant," just turn the lens to the right word and you can be sure of the result! And the new patented film-key makes loading so easy; no more fiddling, the film spool is just laid in the camera anyhow and the key engages automatically. The shutter, designed especially for the Bessa, is very reliable and gives speeds of $\frac{1}{25}$, $\frac{1}{50}$, and $\frac{1}{100}$ th sec. in addition to T and B. It also incorporates a novel distant release that enables the operator to include himself in the picture. The lens is the famous Voigtlander "Voigtar" F/6.3 which gives perfect definition right up to the corners of the picture and is so luminous that snapshots can be made even when the light is not very good. The direct vision view-finder makes exposures from eye-level possible thus doing away with the so-called "tummy perspective" which spoils so many snapshots.

SPECIFICATION

- Body:** Steel, base-board aluminium die-casting
Finish: Tough leather. Metal parts black enamelled or nickel plated. Camera edges nickel plated
Lens: Voigtlander Anastigmat "Voigtar" F/6.3
Focussing: The Voigtlander "Three Point" system, making mistakes impossible
Shutter: Special Bessa shutter incorporating distant release
Lens panel: New design, very strong and firm
View-finders: Revolving brilliant finder and direct vision finder on the camera body
Bellows: Best quality black leather
Carrying Grip: Hardly noticeable when not in use and of really practical size when necessary
Accessories: Cable release and Instruction book.

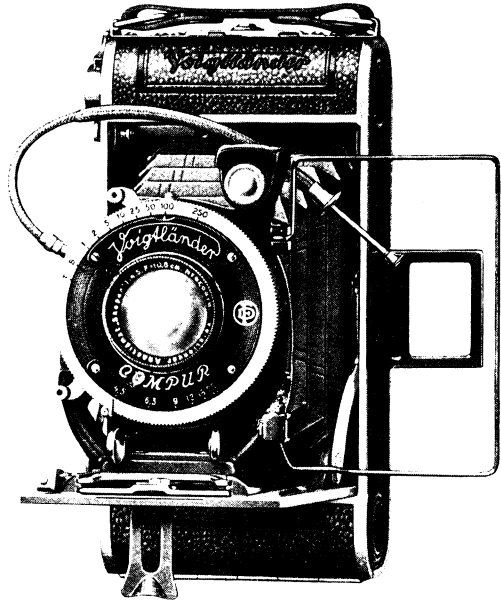
	$3\frac{1}{4}'' \times 2\frac{1}{4}''$	$4\frac{1}{4}'' \times 2\frac{1}{2}''$
Dimensions	$5\frac{3}{4}'' \times 2\frac{7}{8}'' \times 1\frac{1}{4}''$	$7'' \times 3\frac{1}{4}'' \times 1\frac{1}{2}''$
Weight	1 lb. $\frac{1}{3}$ oz.	1 lb. 7 ozs.
Price with self-timer	\$ 15. —	\$ 17.50

USEFUL ACCESSORIES

Finder magnifier (see page 25)		
for $3\frac{1}{4}'' \times 2\frac{1}{4}''$ No. 5	1.—	
for $4\frac{1}{4}'' \times 2\frac{1}{2}''$ No. 2		1.—
Yellow filters α or β designed to fit over the lens without disturbing the focussing arrangement		
for $3\frac{1}{4}'' \times 2\frac{1}{4}''$	2.—	
for $4\frac{1}{4}'' \times 2\frac{1}{2}''$		2.—
Portrait attachment No. 57 resp. 58.	2.—	2.25
Carrying case.	2.50	2.75



The Holiday and
Weekend Camera



VOIGTLÄNDER ROLL-FILM CAMERA

FOR ROLL-FILMS

3" × 2"
(5 × 8 cm)

4 1/4" × 2 1/2"
(6 1/2 × 11 cm)

5 1/2" × 3 1/4"
(8 × 14 cm, also for plates)

Of recent years roll-film cameras have undeniably become the most popular and so huge is the production of this Voigtlander model that the consequent low prices give very little indication of the wonderful value offered. Every part of this camera has been designed for maximum efficiency whilst the sturdy construction will ensure long use. The winding key is very much stronger than fitted to some makes. The back is hinged and perfectly light tight when closed. The loading device is simple and efficient.

Voigtlander

Exterior dimensions:

Weights:

Model 3"×2" (5×8 cm)	5 ¹ / ₂ "×2 ³ / ₄ "×1 ¹ / ₈ " (2.9×7 ×14.1 cm)	12 ¹ / ₂ ozs.
Model 3 ¹ / ₄ "×2 ¹ / ₄ " (6×9 cm)	5 ⁹ / ₄ "×2 ⁷ / ₈ "×1 ¹ / ₄ " (3.3×7.3 ×14.6 cm)	11b. 2 ozs.
Model 4 ¹ / ₄ "×2 ¹ / ₈ " (6.5×11 cm)	7"×3 ¹ / ₄ "×1 ¹ / ₂ " (3.9×8.1 ×18 cm)	1 ¹ / ₂ lbs.
Model 5 ¹ / ₂ "×3 ¹ / ₄ " (8×14 cm)	9 ¹ / ₂ "×4 ⁹ / ₈ "×2" (4.8×11.5×23.6 cm)	2 ³ / ₄ lbs.

Accessories: Instructions, testing certificate, exposure table; and cable release

Optical equipment:

Model 3"×2" (5×8 cm)

Prices

Focussing: 3 ft.—inf.

\$

Voigtar Anastigmat lens F/6.3, 3 ¹ / ₂ " (9 cm) in Embezet shutter (1/100th sec.)	18.50
Skopar Anastigmat lens F/4.5, 3 ⁹ / ₈ " (8.3 cm) in Compur shutter B without self-timer (1/300th sec.)	30.—
Heliar Anastigmat lens F/4.5, 3 ⁹ / ₈ " (8.3 cm) in Compur shutter B without self-timer (1/300th sec.)	38.50

Model 4¹/₄"×2¹/₂" (6¹/₂×11 cm)

Focussing: 4 ft.—inf.

Skopar Anastigmat lens F/4.5, 4 ¹ / ₂ " (11.4 cm) in Embezet shutter combined with self-timer	27.50
Skopar Anastigmat lens F/4.5, 4 ¹ / ₂ " (11.4 cm) in Compur shutter B combined with self-timer (1/260th sec.)	39.50
Heliar Anastigmat lens F/4.5, 4 ¹ / ₂ " (11.4 cm) in Compur shutter B combined with self-timer (1/260th sec.)	50.—

Model 5¹/₂"×3¹/₄" (8×14 cm)

Focussing: 5 ft.—inf. This Model is fitted with a combination back and can be used with rollfilms and plates

Voigtar Anastigmat lens F/6.3, 6" (15 cm) in Embezet shutter (1/100th sec.)	29.50
Voigtar Anastigmat lens F/6.3, 6" (15 cm) in Ibsor shutter (1/126th sec.)	33.—
Skopar Anastigmat lens F/4.5, 6" (15 cm) in Compur shutter B combined with self-timer (1/300th sec.)	60.—
Heliar Anastigmat lens F/4.5, 6" (15 cm) in Compur shutter B combined with self-timer (1/200th sec.)	66.—

Accessories:

Finder magnifier (see page 25)

No. 5 for camera 3"×2" (5×8) and 3 ¹ / ₄ "×2 ¹ / ₄ " (6×9 cm)	} 1.— any size
No. 2 for camera 4 ¹ / ₄ "×2 ¹ / ₈ " (6.5×11 cm)	
No. 4 for camera 5 ¹ / ₂ "×3 ¹ / ₄ " (8×14 cm)	

Yellow filters α or β (see page 21)

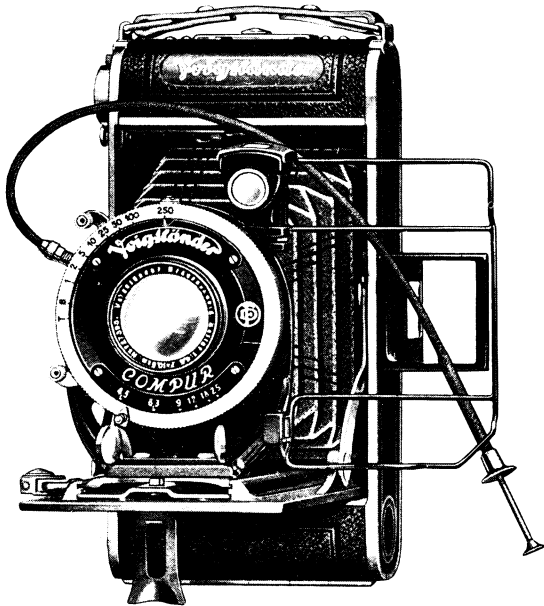
for 3"×2" (5×8 cm), for Voigtar lens F/6.3 (21 mm ø), for Skopar and Heliar F/4.5 (25 mm ø), for 3 ¹ / ₄ "×2 ¹ / ₄ " (6×9 cm), for all lenses (29 mm ø), for 4 ¹ / ₄ "×2 ¹ / ₈ " (6.5×11 cm), for all lenses (32.5 mm ø), for 5 ¹ / ₂ "×3 ¹ / ₄ "	} 3.— any size
3 ¹ / ₄ "×5 ¹ / ₂ " Voigtar F/6.3 (32.5 mm ø), for Skopar and Heliar F/4.5 (41.8 mm ø)	
Carrying cases for above, plush lined for 3 ¹ / ₄ "×2 ¹ / ₄ "	3.—
Carrying cases for above, plush lined for 2 ¹ / ₂ "×4 ¹ / ₄ "	3.50
Carrying cases for above, plush lined for 3 ¹ / ₄ "×5 ¹ / ₂ "	4.50

Wide angle Focar lens

for 5 1/8" x 3 1/4" only, for Skopar and Heliar No. 32	5.—
Ground glass in metal frame with light-protecting hood	3.50
Single metal slides (normal edge) size: 5 1/2" x 3 1/4"	1.—

Portrait attachments

No. 50 for 3" x 2" Rollfilm camera with Voigtar	2.—
No. 51 for 3" x 2" Rollfilm camera with Skopar or Heliar	2.—
No. 52 for 3 1/4" x 2 1/4" Rollfilm camera all models	2.—
No. 53 for 4 1/4" x 2 1/2" Rollfilm camera with Skopar or Heliar	2.25
No. 54 for 4 1/4" x 2 1/2" Rollfilm camera with Voigtar	2.25
No. 55 for 5 1/8" x 3 1/4" Rollfilm camera with Voigtar	2.25
No. 56 for 5 1/2" x 3 1/4" Rollfilm camera with Skopar or Heliar	3.—
No. 57 for 12" x 3 1/4" Bessa	2.25
No. 58 for 2 1/2" x 4 1/4"	2.25



Inos

The Two in One Camera

12 Vest Pocket
 or
6 2 1/4" x 3 1/4"
 Pictures

The "Inos" camera was designed to fill a dual purpose. For those who wish to make a series of snapshots at a minimum cost and then select the best films for enlarging can get 12 vest pocket pictures out of a regular 2 1/4" x 3 1/4" film or six full size pictures.

A metal mask instantly inserted in the back of the camera makes this possible. The camera is made with two film reading windows to be used when taking the smaller pictures and is fitted with a special finder which is masked off properly to get the right field.

Voigtlander

The great popularity of making small pictures at a minimum cost prompted us to put this camera on the market and at the same time the regular size picture can be had as well thus really making this camera a model known as two in one.

The camera fitted with our high grade of Anastigmats with a focal length of 10.5 cm covering a full size picture and when used on the smaller size you get the benefit of a long focal length covering a smaller size picture. The effect is that you get a larger image on a small area or what a telephoto lens would give you.

Weight and Dimensions:

The same as those of Roll-Film cameras $3\frac{1}{4}'' \times 2\frac{1}{4}''$ (6×9 cm).

Optical equipment:

Model $3\frac{1}{4}'' \times 2\frac{1}{4}''$ (6×9 cm) Focussing: 4 ft.—inf.

Prices
\$

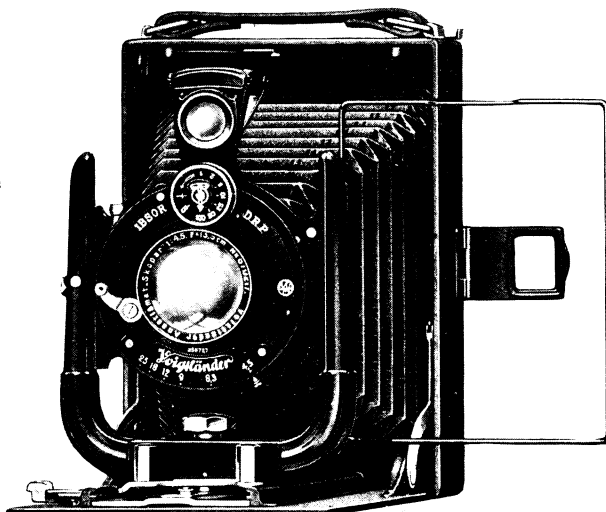
Skopar Anastigmat lens F/4.5 $4\frac{1}{8}''$ (10.5 cm) in Compur shutter B combined with self-timer ($\frac{1}{250}$ th sec.)	32.50
Heliar Anastigmat lens F/4.5 $4\frac{1}{8}''$ (10.5 cm) in Compur shutter B combined with self-timer ($\frac{1}{250}$ th sec.)	42.—
Skopar Anastigmat lens F 4.5 in Embezet shutter self-timer	25 —

Accessories:

Finder magnifier No. 5 (see page 25)	1.—
Yellow filters α or β	3.—
Portrait attachment No. 52	2.—
Carrying cases for above plush lined	3.—



The Single Extension
Model



3 1/2" x 2 1/2" (6 1/2 x 9 cm) 1/2 actual size
(Construction identical for both sizes)

VAG CAMERAS

FOR PLATES AND FILMPACKS

3 1/2" x 2 1/2" (6 1/2 x 9 cm) 4 1/4" x 3 1/4" (or 9 x 12 cm)

Although this is the cheapest of the Voigtländer plate models, it will be recognized by the prudent purchaser that exceptionally good value is offered, particularly in the optical and shutter equipment.

Filmpacks offer some advantages over roll-films and the addition of a camera of this sort in the 3 1/2" x 2 1/2" size to one's equipment might be advantageously considered. In any case, if the intending purchaser seeks a light, inexpensive pocket camera, this model will intirely fulfil his requirements.

SPECIFICATION

Body: Aluminium alloy

Finish: Neat black leather, metal parts black enamelled or nickel plated

Focussing: Radial movement, distances in feet

Extension: Single

Front: New design with rising and cross movements

Viewfinders: Brilliant revolving type and direct vision finder with sighter at back

Bellows: Best quality black leather

Accessories: Three single metal plate holders, cable release, instructions, exposure table, and testing certificate.

Sizes	Focussing	Dimensions	Weight
3 1/2" x 2 1/2" (6 1/2 x 9 cm)	4 ft.—inf.	5" x 3 1/2" x 1 1/2"	1 lb. 4 ozs.
4 1/4" x 3 1/4" (or 9 x 12 cm)	4 ft.—inf.	6" x 4 1/4" x 1 1/2"	1 lb. 13 ozs.

Optical equipment:

	Prices	
	$3\frac{1}{2}'' \times 2\frac{1}{2}''$ (6.5×9 cm)	$4\frac{1}{4}'' \times 3\frac{1}{4}''$ (or 9×12 cm)
focal length for $3\frac{1}{2}'' \times 2\frac{1}{2}''$ (6.5×9 cm), $4\frac{1}{8}''$ (10.5 cm)		
focal length for $4\frac{1}{4}'' \times 3\frac{1}{4}''$ (or 9×12 cm), $5\frac{1}{4}''$ (13.5 cm)		
with Voigtlander "Voigtar" Anastigmat lens F/6.3 in Embezet shutter ($\frac{1}{100}$ th sec.)	\$ 18.—	\$ 22.—
with Voigtlander "Voigtar" Anastigmat lens F/6.3 in Embezet shutter combined with self-timer ($\frac{1}{100}$ th sec.)	20.—	23.—
with Voigtlander "Voigtar" Anastigmat lens F/6.3 in Ibsor shutter ($\frac{1}{125}$ th sec.)	22.—	24.—
with Voigtlander "Skopar" Anastigmat lens F/4.5 in Ibsor shutter ($\frac{1}{100}$ th sec. for $4\frac{1}{4}'' \times 3\frac{1}{4}''$ and $\frac{1}{125}$ th sec. for $3\frac{1}{2}'' \times 2\frac{1}{2}''$)	30.—	31.—

Accessories:

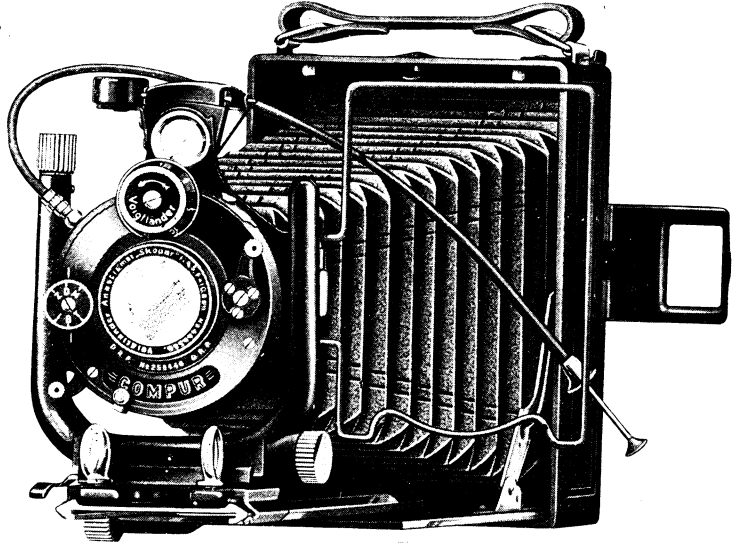
single metal slide for $3\frac{1}{2}'' \times 2\frac{1}{2}''$ (6.5×9 cm)	—75	
for $4\frac{1}{4}'' \times 3\frac{1}{4}''$ (or 9×12 cm)		—90
Filmpack adapter for $3\frac{1}{2}'' \times 2\frac{1}{2}''$ (6.5×9 cm)	2.75	
for $4\frac{1}{4}'' \times 3\frac{1}{4}''$ (or 9×12 cm)		3.—
Yellow filters α or β (see page 21)		
for $3\frac{1}{2}'' \times 2\frac{1}{2}''$ (6.5×9 cm) Voigtar and Skopar (29 mm ϕ)	3 —	
for $4\frac{1}{4}'' \times 3\frac{1}{4}''$ (or 9×12 cm) Voigtar (32.5 mm ϕ), Skopar (36.8 mm ϕ)		3.—
Focal lenses (wide angle) (see pages 22—24) for Skopar only		
for $3\frac{1}{2}'' \times 2\frac{1}{2}''$ (6.5×9 cm) No. 30	3.50	
for $4\frac{1}{4}'' \times 3\frac{1}{4}''$ (or 9×12 cm) No. 31		4.—
Finder magnifier (see page 25)		
No. 2 for $3\frac{1}{2}'' \times 2\frac{1}{2}''$ (6.5×9 cm)	1.—	
No. 3 for $4\frac{1}{4}'' \times 3\frac{1}{4}''$ (or 9×12 cm)		1.—
Metal slides only for holder or adapter	—35	—35
Carrying case	4.—	4.50



"Summer Afternoon"
Taken by an amateur with a Voigtlander Skopar F/4.5



The Camera
for
All-Round
Work



4 1/4" x 3 1/4" (or 9 x 12 cm), 1/3 actual size

AVUS CAMERAS FOR PLATES AND FILMPACKS

3 1/2" x 2 1/2" (6 1/2 x 9 cm) 4 1/4" x 3 1/4" (or 9 x 12 cm)

This camera appeals to the photographer who desires a double extension model but does not wish to purchase a *de luxe* instrument such as the "Tourist" (Bergheil). A careful comparison of this camera with others offered at or about the same price, will reveal the superiority of the Voigtlander Avus, whilst the lenses and shutters are excellent in every way.

SPECIFICATION

Body: Light aluminium alloy

Finish: Black morocco leather, metal parts black enamelled or nickel plated

Focussing: Rack and pinion movement with infinity catch

Extension: More than double

Front: New design "U" front with rising and cross movements by rack and pinion

Viewfinders: Brilliant revolving pattern with spirit-level attached, also wire direct-vision finder with sighter at back

Bellows: Best quality black leather

Accessories: Three single metal plate holders, cable release, instructions, exposure table, and testing certificate.

Sizes	Extension	Focussing	Dimensions	Weight
3 1/2" x 2 1/2" (6 1/2 x 9 cm)	8 7/8"	3 ft.—inf.	4 7/8" x 3 1/2" x 2"	1 lb. 6 1/2 ozs.
4 1/4" x 3 1/4" (or 9 x 12 cm)	11 1/4"	4 ft.—inf.	6" x 4 3/8" x 2 1/8"	2 lb. 6 ozs. — 38

37/6

38

Voigtlander

Optical equipment:

	Prices	
	3 1/2" x 2 1/2" (6.5 x 9 cm)	4 1/4" x 3 1/4" (6.5 x 9 cm) (or 9 x 12 cm)
focal length for 3 1/2" x 2 1/2" (6.5 x 9 cm), 4 1/8" (10.5 cm)		
focal length for 4 1/4" x 3 1/4" (or 9 x 12 cm), 5 1/4" (13.5 cm)		
with Voigtländer "Voigtar" Anastigmat lens F/6.3, in Ibsor shutter (1/125 th sec.)	\$ 30.—	\$ 33.—
with Voigtländer "Skopar" Anastigmat lens F/4.5 in Ibsor shutter (1/125 th sec. for 3 1/2" x 2 1/2" and 1/100 th sec. for 4 1/4" x 3 1/4")	33.—	38.—
with Voigtländer "Skopar" Anastigmat lens F/4.5 in Compur shutter B combined with self-timer	39.—	44.—
Accessories:		
single metal slide for 3 1/2" x 2 1/2" (6.5 x 9 cm)	—75	
for 4 1/4" x 3 1/4" (or 9 x 12 cm)		—90
Film-pack adapter for 3 1/2" x 2 1/2" (6.5 x 9 cm)	2.75	
for 4 1/4" x 3 1/4" (or 9 x 12 cm)		3.—
Yellow filters α or β (see page 21)		
for 3 1/2" x 2 1/2" (6.5 x 9 cm) Voigtar and Skopar (29 mm \varnothing)	3.—	
for 4 1/4" x 3 1/4" (or 9 x 12 cm) Voigtar (32.5 mm \varnothing), Skopar (36.8 mm \varnothing)		3.—
Focar lenses (see pages 22—24)		
for 3 1/2" x 2 1/2" Voigtar Nos. 2, 3 and 4, Skopar Nos. 2, 3, 4 and 30	3.50	
for 4 1/4" x 3 1/4" Voigtar Nos. 5, 13 and 15, Skopar Nos. 6, 7, 8, 9 and 31		4.—
Finder magnifier (see page 25)		
No. 2 for 3 1/2" x 2 1/2" (6.5 x 9 cm)	1.—	
No. 3 for 4 1/4" x 3 1/4" (or 9 x 12 cm)		1.—
Metal slides only for holder or adapter	—35	—35
Carrying case, plush lined	4.—	4.50

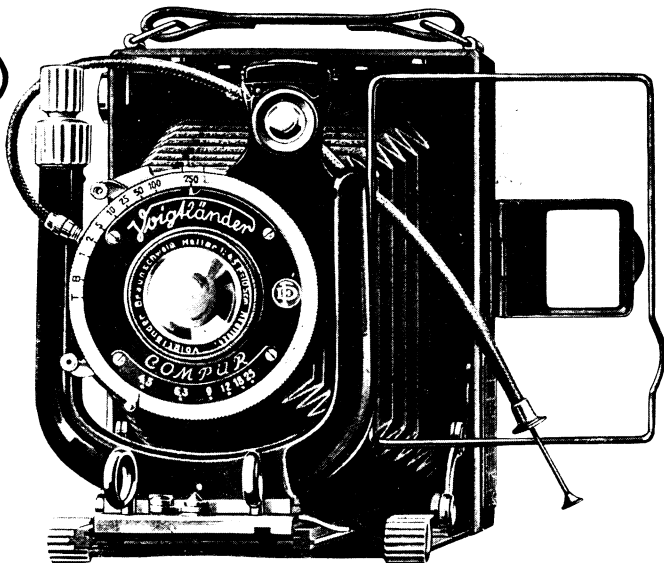


„Practice”
Taken by an amateur with a Voigtländer Heliar F/4.5

Tourist

The Master Camera

A triumph
of craftsmanship



3 1/2" x 2 1/2" (6 1/2 x 9 cm) 1/2 actual size
(Construction identical for all three sizes)

TOURIST CAMERAS

THE EXPERT'S CAMERA FOR PLATES AND FILMPACKS

3 1/2" x 2 1/2"	4 1/4" x 3 1/4"	5 1/2" x 3 1/2"
(6 1/2 x 9 cm)	(or 9 x 12 cm)	(or 10 x 15 cm)
		Post Card size

This is a *de luxe* instrument in every sense of the word. It has many unique features as shown below, but the construction throughout and the really elegant finish are such that it can be confidently claimed that there is no better camera of this type on the market. The "Tourist" (Bergheil) camera is a triumph of craftsmanship.

SPECIFICATION

Body: Light and strong aluminium alloy

Finish: Black morocco leather, metal parts black enamel or nickel plated

Focussing: Double rack and pinion, new clamping device, infinity catch, engraved depth of focus table

Extension: More than double

Front: New design "U" front of great rigidity with new and handy rising and cross movements by rack and pinion, spirit levels are sunk in the milled heads operating focussing and cross movements. Shutter interchangeable

Viewfinders: Brilliant revolving type and direct vision wire finder with sighter at back

Struts: Locking device to prevent camera being accidentally closed before the front is pushed back

Bellows: Best quality black leather

Accessories: Three single metal plate holders in leather wallet, cable release, instructions, exposure table, and testing certificate.

Voigtländer

Model 3¹/₂" × 2¹/₂" (6.5 × 9 cm)

Dimensions: 5" × 3³/₄" × 2", weight: 1 lb. 12 ozs., extension: 9⁵/₈"

Optical equipment:

Prices
\$

in Compur shutter B combined with self-timer (1/250 th sec.).....	60.50
*Anastigmat "Heliar" F/4.5 (focal length 4 ³ / ₄ " [12 cm]) in Compur shutter B combined with self-timer (1/200 th sec.)	66.50
*Anastigmat "Heliar" F/3.5 (focal length 4 ¹ / ₈ " [10.5 cm]) in Compur shutter B combined with self-timer (1/200 th sec.)	77.50
*Dimensions: 5" × 3 ³ / ₄ " × 2 ¹ / ₄ ", weight: 1 lb. 15 ozs., extension 9 ⁷ / ₈ "	

Model 4¹/₄" × 3¹/₄" (or 9 × 12 cm)

Dimensions: 6" × 4¹/₂" × 2¹/₄", weight: 2 lbs. 9 ozs., extension: 11¹/₂"

Optical equipment:

Anastigmat "Heliar" F/4.5 (focal length 5 ¹ / ₄ " [13.5 cm]) in Compur shutter B combined with self-timer (1/200 th sec.)	77.50
Anastigmat "Heliar" F/4.5 (focal length 6" [15 cm]) in Compur shutter B combined with self-timer (1/200 th sec.)	80.—
Anastigmat "Heliar" F/3.5 (focal length 5 ¹ / ₄ " [13.5 cm]) in Compur shutter A (1/200 th sec.)	88.—

Model 5¹/₂" × 3¹/₂" (or 10 × 15 cm) P. C. size

Dimensions: 7¹/₈" × 5" × 2³/₈", weight: 3 lbs. 4 ozs., extension: 14¹/₂"

Optical equipment:

Anastigmat "Skopar" F/4.5 (focal length 6 ¹ / ₂ " [16.5 cm]) in Compur shutter A (1/200 th sec.)	77.50
Anastigmat "Heliar" F/4.5 (focal length 6 ¹ / ₂ " [16.5 cm]) in Compur shutter A (1/200 th sec.)	95.—
Anastigmat "Heliar" F/4.5 (focal length 7" [18 cm]) in Compur shutter A (1/200 th sec.)	100.—

Accessories:

single metal slide for 3 ¹ / ₂ " × 2 ¹ / ₂ " (6.5 × 9 cm).....	—75
for 4 ¹ / ₄ " × 3 ¹ / ₄ " (or 9 × 12 cm).....	—90
for 5 ¹ / ₂ " × 3 ¹ / ₂ " (or 10 × 15 cm) P. C. size	1.—
Film-pack adapter for 3 ¹ / ₂ " × 2 ¹ / ₂ " (6.5 × 9 cm).....	2.75
for 4 ¹ / ₄ " × 3 ¹ / ₄ " (or 9 × 12 cm).....	3.—
for 5 ¹ / ₂ " × 3 ¹ / ₄ " (or 10 × 15 cm) P. C. size	3.50

Yellow filters α or β (see page 21)

for 3 ¹ / ₂ " × 2 ¹ / ₂ " (6.5 × 9 cm)	
for Collinear F/6.3 and Heliar F/4.5 4 ¹ / ₈ " (10.5 cm) (29 mm Ø)	3.—
for Heliar F/4.5 4 ³ / ₄ " (12 cm) and Heliar F/3.5 (36.8 mm Ø)	3.—

for 4 1/4" x 3 1/4" (or 9 x 12 cm)

Prices
\$

for Heliar F/4.5 5 1/4" (13.5 cm) (36.8 mm Ø)	3.—
for Heliar F/4.5 6" (15 cm) (41.8 mm Ø)	3.50
for Heliar F/3.5 5 1/4" (13.5 cm) (46.9 mm Ø)	4.—

for 5 1/2" x 3 1/2" (or 10 x 15 cm) P. C. size

for Collinear F/6.3 (36.8 mm Ø)	3.—
for Skopar and Heliar F/4.5 (46.9 mm Ø)	4.—

Focar lens (see pages 22-24)

for 3 1/2" x 2 1/2" (6.5 x 9 cm)

for Collinear F/6.3 Nos. 2, 3, 4 and 30	3.50
for Heliar F/4.5 4 1/8" (10.5 cm) Nos. 2, 3, 4 and 30	3.50
for Heliar F/4.5 4 3/4" (12 cm) Nos. 6, 7, 8, 9 and 31	4.—
for Heliar F/3.5 4 1/8" (10.5 cm) Nos. 6, 7, 8, 9, 16 and 31	4.—

for 4 1/4" x 3 1/4" (or 9 x 12 cm)

for Collinear F/6.3 Nos. 2, 4 and 30	3.50
for Heliar F/4.5 5 1/4" (13.5 cm) Nos. 6, 7, 8, 9 and 31	4.—
for Heliar F/4.5 6" (15 cm) Nos. 10 and 32	5.—
for Heliar F/3.5 5 1/4" (13.5 cm) Nos. 11, 12, 14 and 33	5.—

for 5 1/2" x 3 1/2" (10 x 15 cm) P. C. size

for Collinear F/6.3 Nos. 6, 9 and 31	4.—
for Skopar and Heliar F/4.5 Nos. 11, 12, 14 and 33	5.—

Finder magnifier (see page 25)

No. 2 for 3 1/2" x 2 1/2" (6.5 x 9 cm)

No. 4 for 4 1/4" x 3 1/4" (or 9 x 12 cm) and 5 1/2" x 3 1/2" (or 10 x 15 cm) P. C. size

Carrying cases, plush lined 3 1/2" x 2 1/2"

4 1/4" x 3 1/4"	4.50
5 1/2" x 3 1/2"	6.—

Telephoto lens "Tele-Dynar" F/6.3 (see page 24), state whether for Ibsor or for Compur shutter A or B

Focal length 7 7/8" (20 cm) for shutter with or without self-timer of Collinear F/6.3 and Heliar F/4.5 4 1/8" (10.5 cm) (3 1/2" x 2 1/2" or 6.5 x 9 cm)

Focal length 10" (25.5 cm) for shutter with or without self-timer of Heliar F/4.5 4 3/4" (12 cm), Heliar F/3.5 4 1/8" (10.5 cm) (3 1/2" x 2 1/2" or 6.5 x 9 cm) and Heliar F/4.5 5 1/4" (13.5 cm) (4 1/4" x 3 1/4" or 9 x 12 cm)

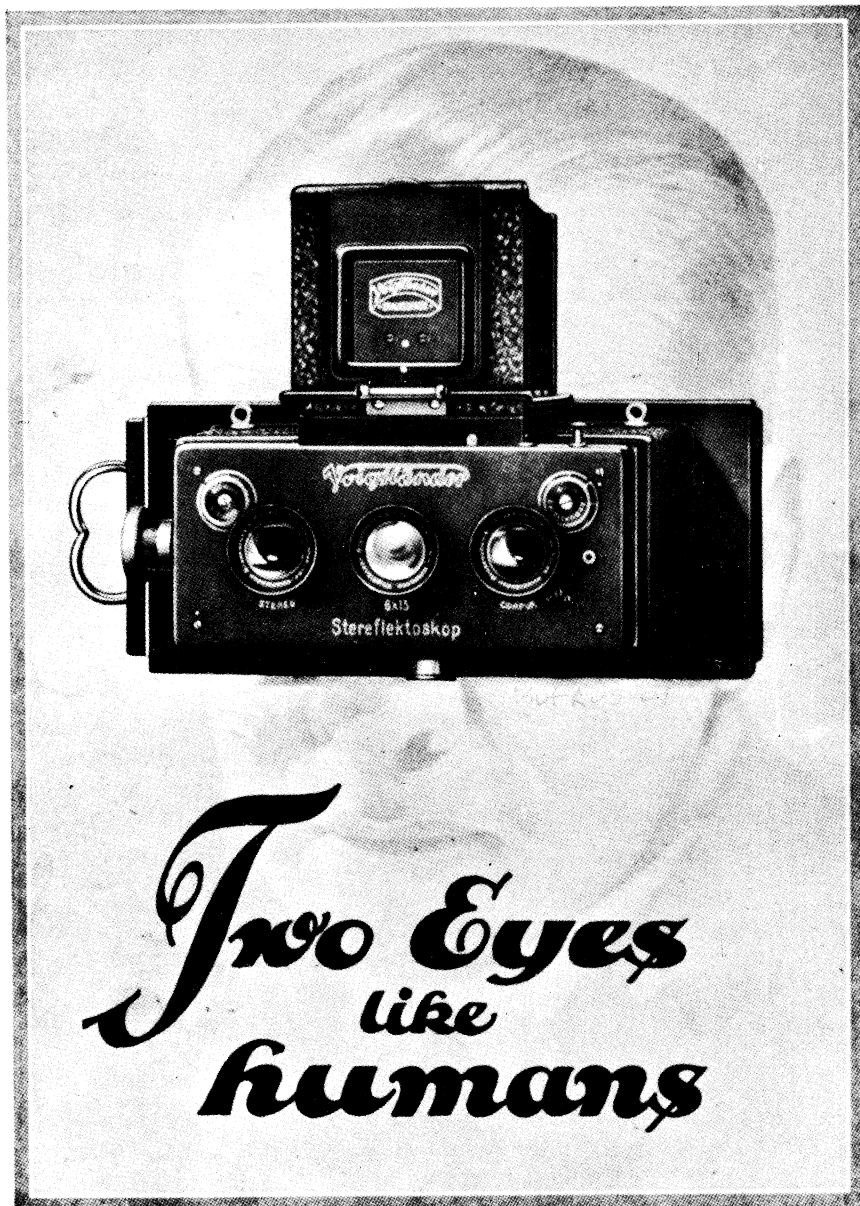
Focal length 10" (25.5 cm) for shutter with self-timer of Heliar F/4.5 6" (15 cm) (4 1/4" x 3 1/4" or 9 x 12 cm)

Focal length 11 3/8" (29 cm) for shutter without self-timer of Heliar F/4.5 6" (15 cm) and Heliar F/3.5 5 1/4" (13.5 cm) (4 1/4" x 3 1/4" or 9 x 12 cm)

Focal length 12 5/8" (32 cm) for shutter of Skopar and Heliar 5 1/2" x 3 1/2" or 10 x 15 cm P. C. size

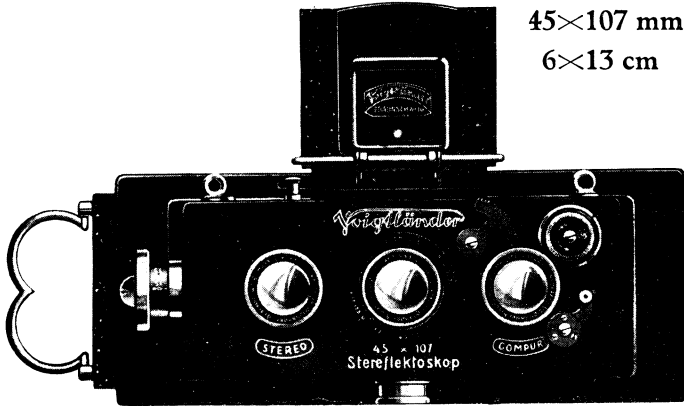
	without shutter	Prices in Compur shutter	in Compur shutter combined with self-timer
	\$	\$	\$
3 1/2" x 2 1/2" or 6.5 x 9 cm	35.75	50.—	53.50
4 1/4" x 3 1/4" or 9 x 12 cm	41.25	57.75	62.75
4 1/4" x 3 1/4" or 9 x 12 cm	50.—	66.—	71.50
5 1/2" x 3 1/2" or 10 x 15 cm	55.—	72.50	—





*Two Eyes
like
humans*

Stereoflectoscope



45x107 model $\frac{1}{2}$ actual size

VOIGTLÄNDER STEREFLECTOSCOPE

THE MODERN STEREO-REFLEX- CAMERA

45x107 mm 6x13 cm

Stereoscopic-Photography most certainly is the most wonderful of all photography, as it gives us the real impression of nature in relief. Though quite interesting results may be obtained with simple stereo-cameras, there is nothing to beat the stereo-reflex-cameras, the finest of which is represented by the "Stereoflectoscope", which is made in two sizes, viz. 45x107 mm and 6x13 cm. A full-size image is seen in the top focussing screen right up to the moment of exposure.

Accessories: One all-metal changing box for twelve ordinary or 8 colour plates with plate indicator, cable release, brown leather case with lock and shoulder strap, instructions, exposure table, and testing certificate.

Voigtlander

SPECIFICATION

Lenses: 2 taking and 1 reflex Heliar F/4.5, 6 cm focus for 45×107 mm, 7.5 cm focus for 6×13 cm

Shutter: Reliable Compur shutter (Speed up to $1/250^{\text{th}}$ sec.)

Body: All-metal, leather covered

Finish: Metal parts black enamelled, fittings nickel plated

Focussing: Rack and pinion wheel movement with engraved scale, engraved depth of focus table

Viewfinders: Special reflex focussing screen with sunk spirit level protected by a self-erecting metal hood with focussing magnifier; wire frame finder

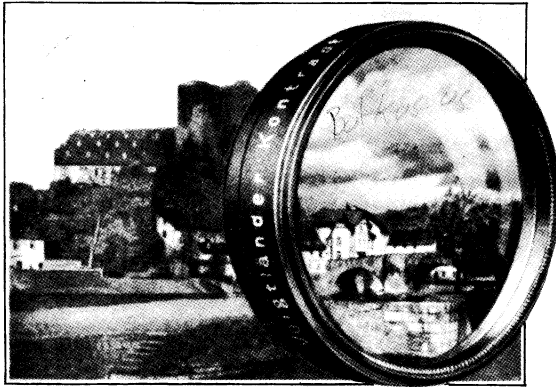
Changing box: All-metal for twelve ordinary or 8 colour plates with plate number indicator

Sizes	Dimensions (with changing box)	Weight (with changing box)	Focussing	Prices \$
45×107 mm	$6\frac{1}{8}'' \times 4'' \times 2\frac{3}{4}''$	2 lbs. 2 $\frac{1}{2}$ ozs.	2 $\frac{1}{2}$ ft.—inf.	137.50
6×13 cm	$7'' \times 4\frac{3}{4}'' \times 3\frac{1}{2}''$	3 lbs.	4 ft.—inf.	170.—

	Prices	
	45×107 mm	6×13 cm
Accessories:	\$	\$
Single black metal slides for extra thin plates*	—75	—85
Ditto German silver*	1.85	2.75
Ditto German silver for colour plates*	1.85	2.75
Single black metal slides for colour plates and plates of normal thickness*	—75	—85
Filmpack adapter	3.50	4.—
Adapter for single metal slides or filmpack adapter 45×107 mm*	4.—	
Adapter for single metal slides or filmpack adapter 6×13 cm*		5.—
Extra changing box with 12 sheaths	35.—	45.—
Extra changing box with 8 sheaths for colour plates	35.—	45.—
Set of 12 sheaths for changing box	5.—	6.—
Set of 8 sheaths for colour plates for changing box	3.50	6.—
Straightening plate for 45×107 mm only	3.50	
Pair of yellow filters matched α (2×)	6.—	7.—
or β (5×)	6.—	7.—
Pair of Ducar filters for colour plates	9.—	10.—
Pair of Ducar filters (for Agfa colour plates)	9.—	10.—
Stereoscopic printing frame	4.50	5.—
Mahogany Stereoscope for prints and transparencies	10.—	13.—
Mahogany Stereoscope for prints and transparencies, eye-pieces with lateral movement	14.—	16.50

* For single metal slides or filmpack-adapters a special adapter is necessary

VOIGTLÄNDER YELLOW-FILTERS



If you like clouds in your pictures and a faithful rendering of the delicate tints of nature you should use orthochromatic plates (or films) with a Voigtlander yellow-filter (orthochromatic screen). They are made in two densities covering the whole range of amateur work.

2× (marked ALPHA) requiring an increase of 2 times in exposure and suitable for instantaneous photography in bright light, and

5× (marked BETA) requiring an increased exposure of 5 times.

The former is recommended for general use and partial correction, whilst the latter is needed for subjects such as copying paintings, flower studies, cloud-pictures, snow and seascapes, etc.

Code words: Yellow-filter "Alpha" *garbe*, yellow-filter "Beta" *galon*

(When ordering a yellow-filter by wire or cable kindly employ one of the codewords as stated above combined with the codeword of the camera respectively lens for which the yellow-filter is desired.)

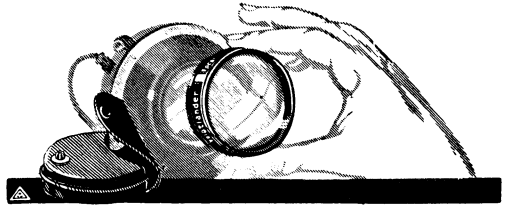
Summary of our filters

Lens	Focal length		Lens hood mm	Price \$	Lens	Focal length		Lens hood mm	Price \$
	in.	cm				in.	cm		
Collinear F/6.3	4 ¹ / ₈	10,5	29	3.—	Skopar F/4.5 . . .	3 ³ / ₈	8,3	25	3.—
	5 ¹ / ₈	13,2	29	3.—		4 ¹ / ₈	10,5	29	3.—
	6 ¹ / ₂	16,5	36,8	3.—		4 ¹ / ₂	11,4	32,5	3.—
Heliar F/3.5	4 ¹ / ₈	10,5	36,8	3.—	Voigtar F/6.3 . . .	5 ¹ / ₄	13,5	36,8	3.—
	5 ¹ / ₄	13,5	46,9	4.—		6	15	41,8	3.50
Heliar F/4.5	3 ³ / ₈	8,3	25	3.—	Tele-Dynar F/6.3	6 ¹ / ₂	16,5	46,9	4.—
	4 ¹ / ₈	10,5	29	3.—		3 ¹ / ₂	9	21	3.—
	4 ¹ / ₂	11,4	32,5	3.—		4 ¹ / ₈	10,5	29	3.—
	4 ³ / ₄	12	36,8	3.—	5 ¹ / ₄	13,5	32,5	3.—	
	5 ¹ / ₄	13,5	36,8	3.—	Tele-Dynar F/6.3	5 ¹ / ₂	14	29	3.—
	6	15	41,8	3.50		7 ⁷ / ₈	20	36,8	3.—
	6 ¹ / ₂	16,5	46,9	4.—		10 ¹ / ₈	25,5	46,9	4.—
7	18	46,9	4.—	11 ³ / ₈		29	50,9	4.50	
					12 ⁵ / ₈	32	56,9	4.50	

The diameters of the various lens-hoods appear in brackets under "yellow filter" by each camera.

Voigtlander

VOIGTLÄNDER FOCAR-LENSES



Focar-Lenses are supplementary lenses which are supplied in neat little leather purses. By simply slipping them on the lens hood quite a range of different-sized images are possible with the original lens from the same standpoint.

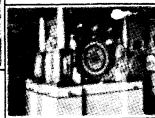
Voigtlander Focar-Lenses are made in twenty different foci for various sizes and two different grades: wide-angle lenses giving a greater field of view and magnifying lenses with improved perspective.

Summary of the Focar-Lenses

Focal length of lens		Diameter of lens hood mm	With a Focar-Lens No.	giving an effective focal length		the picture is enlarged times	Exposing factor	Suitable for camera
in.	cm			in.	cm			
Collinear F/6.3								
4 1/8	10,5	29	2	5 1/4	13,4	1,3	1 1/2	} Tourist 3 1/2" x 2 1/2" (6 1/2 x 9)
			4	6 1/8	15,5	1,5	2 1/4	
			3	7	18	1,7	3	
			30	3 1/2	9	0,85	3/4	
5 1/4	13,2	29	2	7	18	1,4	2	} Tourist 4 1/4" x 3 1/4" (or 9 x 12)
			4	8 5/8	22	1,6	2 1/2	
			30	4 5/16	11	0,85	3/4	
6 1/2	16,5	36,8	6	10	25	1,5	2 1/4	} Tourist 5 1/2" x 3 1/2" (or 10 x 15) P. C. size
			9	11 3/8	29	1,7	3	
			(7)	12 1/4	31	1,9	3 1/2	
			31	5 1/4	13,5	0,8	2/3	



with Focar lens No. 31



without Focar lens



with Focar lens No. 6



with Focar lens No. 8

Taken with Heliar 5 1/4" focus

The effect of Focar-Lenses

Focal length of lens		Diameter of lens hood mm	With a Focars Lens No.	Total effective focal length		The picture is enlarged times	Exposing factor	Suitable for camera
in	cm			in.	cm			

Heliar F/4.5

4 ¹ / ₈	10,5	29	2	5 ¹ / ₄	13,4	1,3	1 ¹ / ₂	} Tourist 3 ¹ / ₂ " × 2 ¹ / ₂ " (6 ¹ / ₂ × 9)
			4	6 ¹ / ₈	15,5	1,5	2 ¹ / ₄	
			3	7	18	1,7	3	
			30	3 ¹ / ₂	9	0,85	3 ³ / ₄	
4 ³ / ₄	12	36,8	6	6 ¹ / ₄	15,9	1,3	1 ¹ / ₂	} Tourist 3 ¹ / ₂ " × 2 ¹ / ₂ " (6 ¹ / ₂ × 9)
			9	6 ⁷ / ₈	17,5	1,4	2	
			7	7 ¹ / ₈	18,2	1,5	2 ¹ / ₄	
			31	8 ³ / ₁₆	20,8	1,7	3	
5 ¹ / ₄	13,5	36,8	6	7 ⁵ / ₁₆	18,6	1,4	2	} Tourist 4 ¹ / ₄ " × 3 ¹ / ₄ " (or 9 × 12)
			9	8 ¹ / ₄	21	1,5	2 ¹ / ₄	
			7	8 ⁵ / ₈	22	1,6	2 ¹ / ₂	
			31	10	25	1,8	3 ¹ / ₄	
6	15	41,8	10	10	25	1,6	2 ¹ / ₂	} Tourist 4 ¹ / ₄ " × 3 ¹ / ₄ " (or 9 × 12)
			32	4 ³ / ₄	12	0,8	2 ³ / ₈	
			11	9	22,8	1,4	2	
				12	10 ¹ / ₈	25,5	1,5	
6 ¹ / ₂	16,5	46,9	14	11 ⁵ / ₈	29,5	1,8	3 ¹ / ₄	} Tourist 5 ¹ / ₂ " × 3 ¹ / ₂ " (or 10 × 15) P. C. size
			33	5 ¹ / ₄	13,5	0,8	2 ³ / ₈	
			11	10 ¹ / ₄	26	1,4	2	
				12	30	1,6	2 ¹ / ₂	
7	18	46,9	(14)	13 ³ / ₄	35	1,9	3 ¹ / ₂	} Tourist 5 ¹ / ₂ " × 3 ¹ / ₂ " (or 10 × 15) P. C. size
			33	5 ³ / ₄	14,5	0,8	2 ³ / ₈	

Heliar F/3.5

4 ¹ / ₈	10,5	36,8	6	5 ¹ / ₂	14	1,3	1 ¹ / ₂	} Tourist 3 ¹ / ₂ " × 2 ¹ / ₂ " (6 ¹ / ₂ × 9)
			9	6	15	1,4	2	
			7	6 ¹ / ₄	15,8	1,5	2 ¹ / ₄	
			16	6 ³ / ₄	17,2	1,6	2 ¹ / ₂	
5 ¹ / ₄	13,5	46,9	31	7 ⁵ / ₈	19,5	1,8	3 ¹ / ₄	} Tourist 4 ¹ / ₄ " × 3 ¹ / ₄ " (or 9 × 12)
			31	3 ⁵ / ₈	9,3	0,85	3 ³ / ₄	
			11	6 ³ / ₄	17,1	1,3	1 ¹ / ₂	
				12	7 ³ / ₈	18,5	1,4	
6 ¹ / ₂	16,5	46,9	14	8 ¹ / ₈	20,4	1,5	2 ¹ / ₄	} Tourist 5 ¹ / ₂ " × 3 ¹ / ₂ " (or 10 × 15) P. C. size
			33	4 ⁵ / ₈	11,5	0,85	3 ³ / ₄	

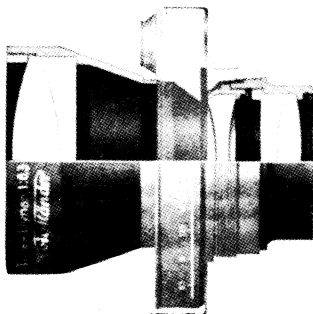
Voigtländer

Focal length of lens		Diameter of lens hood mm	With a Focars Lens No.	Total effective focal length		The picture is enlarged times	Exposing factor	Suitable for camera
in.	cm			in.	cm			
Skopar F/4.5								
4 1/8	10,5	29	2	5 1/4	13,4	1,3	1 1/2	Avus 3 1/2" × 2 1/2" (6 1/2 × 9) Vag 3 1/2" × 2 1/2" (6 1/2 × 9)
			4	6 1/8	15,5	1,5	2 1/4	
			3	7	18	1,7	3	
			30	3 1/2	9	0,85	3/4	
5 1/4	13,5	36,8	6	7 5/16	18,6	1,4	2	Avus 4 1/4" × 3 1/4" (or 9 × 12) Vag 4 1/4" × 3 1/4" (9 × 12)
			9	8 1/4	21	1,5	2 1/4	
			7	8 5/8	22	1,6	2 1/2	
			8	10	25	1,8	3 1/4	
			31	4 5/16	11	0,85	3/4	
6 1/2	16,5	46,9	11	9	22,8	1,4	2	Tourist 5 1/2" × 3 1/2" (or 10 × 15) P. C. size
			12	10 1/8	25,5	1,6	2 1/2	
			14	11 5/8	29,5	1,9	3 1/2	
			33	5 1/4	13,5	0,8	2/3	

Voigtar F/6.3

4 1/8	10,5	29	2	5 1/4	13,4	1,3	1 1/2	Avus 3 1/2" × 2 1/2" (6 1/2 × 9)
			4	6 1/8	15,5	1,5	2 1/4	
			3	7	18	1,7	3	
5 1/4	13,5	32,5	13	6 7/8	17,5	1,3	1 1/2	Avus 4 1/4" × 3 1/4" (or 9 × 12)
			5	8 1/4	21	1,5	2 1/4	
			15	9 1/16	23	1,7	3	

Remark: In case several Focar-Lenses are mentioned for a single lens the best to be used is printed in heavy letters. Those Focar-Lenses whose numbers are placed in brackets do not permit focussing on subjects at close quarters.



“TELE-DYNAR“ F/6.3 (see page 17)

(when ordering state whether for Compur shutter A or B)

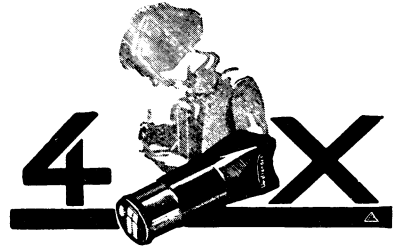
The patent “Tele-Dynar” is a fixed telephoto lens, constructed on entirely new principles which successfully combines a short bellows extension with long focal length at an aperture as large as F/6,3.

The new patent “Tele-Dynar” — quite different from ordinary telephoto lenses — gives a uniform flat field, critical definition right up to the corners and as brilliant an image as any other high-class Anastigmat.

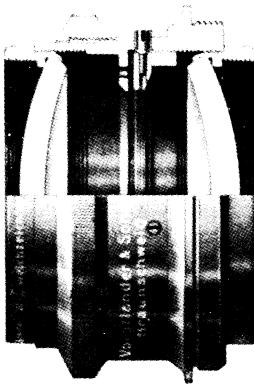
The “Tele-Dynar” is supplied in 5 different sizes to fit all our cameras. After unscrewing the front and back of the ordinary anastigmat of our cameras, the 2 components of the “Tele-Dynar” mounted in cells fit the respective shutters. The two “Tele-Dynar” components are supplied in solid leather case without shutter. If specially desired the Tele-Dynar lens may be delivered in Compur shutter at an additional charge (e. g. interchangeable shutter for Bergheil models).

THE VOIGTLÄNDER 4×FINDER-MAGNIFIER

The brilliant viewfinders fitted to pocket cameras are necessarily small and not always easy to use. With this useful attachment, however, which fits the brilliant finder and magnifies the reflected image, at the same time shading it, the brilliant viewfinder is greatly improved.



	Price		Price
For 3"×2" model For 3 1/4"×2 1/4" model For 4 1/4"×2 1/2" model For 3 1/2"×2 1/2" (all models)	\$1.—	For 4 1/4"×3 1/4" (Vag, Avus) For Tourist 4 1/4"×3 1/4" For Tourist 5 1/2"×3 1/2" (or 10×15 cm) P. C. size	\$1.—



W.-Z. SOFT-FOCUS LENS

A special lens for enlarging

There can be no doubt that while the brilliant definition of modern anastigmats may be of great advantage for general work, its critical rendering of even the smallest details has its drawbacks, where pictorial photography is concerned. This accounts for the soft-focus style, now generally adopted by amateurs and professionals for certain classes of work.

The best and most certain way of obtaining good sized pictures with this pleasing softness is the introduction of the desired degree of diffusion by enlarging your sharp negatives taken with your ordinary camera and lens outfit with the W-Z soft-focus lens.

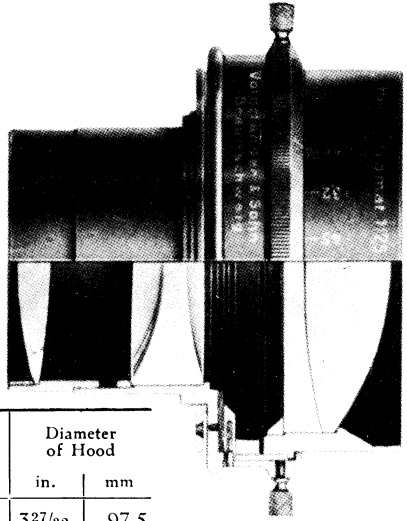
Thus your negatives can be produced with the usual certainty and your pictures can be made either sharply defined or with any desired degree of diffusion to suit the respective subject, and the wishes of the photographer.

Focal length		Price (ordinary mount)	Diameter of lens hood	
in.	cm		in.	mm
7 1/8	18	\$20.—	1 7/16	36,8

Voigtländer

“HELIOSTIGMAT F/2.5”

Extra large aperture Portrait Anastigmat giving fine definition, angle about 30°. This lens is invaluable for work where the shortest exposures are required and is specially recommended for Portraits of Children, Artistic work, Autochrome exposures and all work in bad or indifferent light. The construction of this lens is the result of the most careful calculations, it has a fine delicate definition and shows good colour correction.

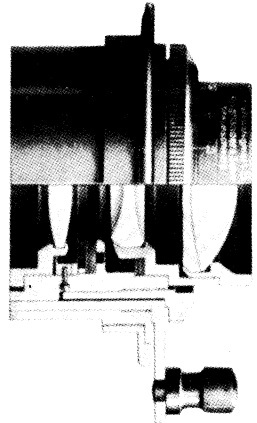


Portrait-Helio Stigmat

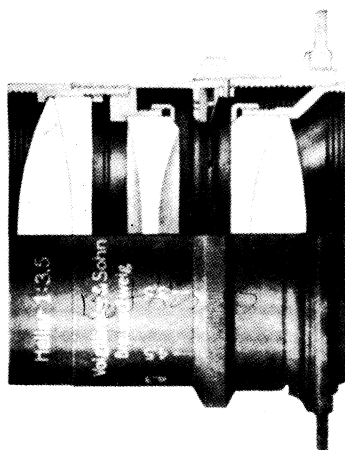
Focal length		Size of Plate sharply covered at full aperture		Prices Half sunk Mount \$	Diameter of Hood	
in.	cm	in.	cm		in.	mm
8 1/4	21	4 1/4 × 3 1/4	9 × 12	240.—	3 27/32	97,5
13 1/4	33,5	6 1/2 × 4 3/4	12 × 16,5	350.—	6	153,5

CINE-HELIOSTIGMAT F/2.5

Cinematograph taking lens of great rapidity. With this lens exposures can be made under the most unfavourable conditions of lighting. Being a brilliant anastigmat, fine crisp sharp pictures are assured. The angle is about 35°.



Focal length		Size of Plate sharply covered at full aperture		Prices		Diameter of Hood	
in.	cm	in.	mm	Normal Mount \$	Focussing Mount \$	in.	mm
1 3/8	3,5	3/4 × 1/2	12 × 18	44.—	—	1 3/16	21
1 5/8	4,25	7/8 × 5/8	15 × 21	44.—	57.—	1 3/16	21
2	5	1 × 3/4	18 × 24	48.—	61.—	1 1/8	29
3	7,5			56.—	—	1 7/16	36,8
4	10			72.—	85.—	1 27/32	46,9



“HELIAR”

Aperture F/3.5 and F/4.5

The Lens with a world wide reputation!
High speed anastigmat, suitable for all general
photographic work, giving crisp, clear, spark-
ling negatives.

To be recommended for:

Cinematographic work / Press and sporting
pictures / Portraits / Photographs with arti-
ficial light / Night and Stage Pictures / Land-
scapes / Photographs in natural colours
General work

“Heliar” F/3.5

Focal length		Size of plate sharply covered at full aperture		Prices					Compur shutter No.	Diameter of hood	
in.	cm	in	cm	ordinary mount \$	counter sunk mount \$	focussing mount \$	in Compur shutter \$	in Compur shutter combined with self-timer \$		in	mm
1 ³ / ₁₆	3	3/4 × 1/2	1,7 × 1,8	27.—	—	—	—	—	00 norm.	1 ³ / ₁₆	21
1 ³ / ₈	3,5	1 × 3/4	1,8 × 2,4	27.—	—	52.—	46.—	—		1 ³ / ₁₆	21
1 ⁵ / ₈	4,2			29.—	—	52.—	—	—		1 ³ / ₁₆	21
2	5			30.—	—	54.—	46.—	—		1 ³ / ₁₆	21
3	7,5	2 ³ / ₈ × 1 ³ / ₄	4 ¹ / ₂ × 6	32.—	—	—	—	62.—	—	1 ¹ / ₈	29
4 ¹ / ₈	10,5	3 ¹ / ₂ × 2 ¹ / ₂	6 ¹ / ₂ × 9	38.—	—	67.—	64.—	68.—	I R. 3	1 ⁷ / ₁₆	36,8
4 ³ / ₄	12			50.—	52.50	69.—	68.—	74.50	II R. 4 II	1 ²¹ / ₃₂	41,8
5 ¹ / ₄	13,5	4 ¹ / ₄ × 3 ¹ / ₄	9 × 12	55.—	68.—	89.—	88.—	—	II R. 5	1 ²⁷ / ₃₂	46,9
6	15			60.—	78.—	90.—	96.—	—	II R. 5	1 ²⁷ / ₃₂	46,9
6 ¹ / ₂	16,5			5 ¹ / ₂ × 3 ¹ / ₂	9 × 14	70.—	80.—	100.—	110.—	—	III R. 7 *
7 ¹ / ₈	18	6 × 4	10 × 15	77.50	90.—	120.—	132.—	—	IV R. 9 *	2 ¹ / ₂	63,5
8 ¹ / ₄	21	7 × 5	13 × 18	82.50	95.—	154.—	130.—	—	IV R. 10 ²	2 ²³ / ₃₂	69
9 ¹ / ₂	24	8 × 5	13 × 21	125.—	—	—	—	—	—	3 ⁵ / ₁₆	84,5
12	30	8 ¹ / ₂ × 6 ¹ / ₂	16 × 21	180.—	—	—	—	—	—	3 ²⁷ / ₃₂	97,5

* = Compound shutter

Voigtlander

"Heliar" F/4.5

Focal length		Size of plate sharply covered at full aperture		Prices			Compur shutter	Diameter of hood	
				ordinary mount	counter-sunk mount	in Compur shutter combined with self-timer			
in.	cm	in.	cm	\$	\$	\$	No.	in.	mm
1 ³ / ₈	3,5	1 × 3/4	1,8 × 2,4	38.—	—	—	—	1 ³ / ₁₆	21
1 ⁵ / ₈	4,2			38.—	—	—	—	1 ³ / ₁₆	21
2	5			38.—	—	—	00 norm	1 ³ / ₁₆	21
3	7,5	2 ³ / ₈ × 2 ³ / ₈	6 × 6	38.—	—	—	—	1 ³ / ₁₆	21
4 ¹ / ₈	10,5	3 ¹ / ₂ × 2 ¹ / ₂	6 ¹ / ₂ × 9	38.—	44.—	56.—	0 norm.	1 ¹ / ₈	29
4 ³ / ₄	12	4 ¹ / ₄ × 3 ¹ / ₄	8 ¹ / ₂ × 10	38.—	47.—	60.—	I. norm.	1 ⁹ / ₃₂	32,5
5 ¹ / ₄	13,5	4 ¹ / ₄ × 3 ¹ / ₄	9 × 12	44.—	51.—	64.—	I. R. 3	1 ⁷ / ₁₆	36,8
6	15	5 ¹ / ₂ × 3 ¹ / ₂	9 × 14	46.—	57.50	76.—	II. R. 4 II	1 ²¹ / ₃₂	41,8
6 ¹ / ₂	16,5	6 × 4	10 × 15	50.—	60.—	—	II. R. 5	1 ²⁷ / ₃₂	46,9
7 ¹ / ₈	18	6 ¹ / ₂ × 4 ³ / ₄	12 × 16	53.—	70.—	—	II. R. 5	1 ²⁷ / ₃₂	46,9
8 ¹ / ₄	21	7 × 5	13 × 18	71.50	75.—	—	III. R. 7*	2 ¹ / ₄	56,9
9 ¹ / ₂	24	7 × 5	13 × 21	99.—	95.—	—	IV. R. 9*	2 ¹ / ₂	63,5
12	30	8 ¹ / ₂ × 6 ¹ / ₂	16 × 21	143.—	—	—	V. R. 12*	3 ⁵ / ₁₆	84,5
14 ¹ / ₄	36	9 ¹ / ₂ × 7	18 × 24	187.—	—	—	—	3 ¹³ / ₁₆	97,5
16 ¹ / ₂	42	10 × 8	21 × 27	249.—	—	—	—	4 ⁹ / ₁₆	116
19	48	12 × 10	26 × 31	292.—	—	—	—	5	127,5
24	60	15 × 12	30 × 40	600.—	—	—	—	6 ¹ / ₁₆	153,5

* = Compound shutter

"Universal-Heliar" with adjustable middle lens, F/4.5

The lens for artistic softness.

Two lenses in one!

When at its normal setting this lens gives pictures of exactly the same sharpness and quality as our famous Heliar lens.

By turning the lens hood the middle lens gradually changes its position and any degree of artistic softness may be obtained according to the respective tastes.

Advantages: One instrument only for both purposes / No retouching owing to the soft-focus effect / The degree of softness may be accurately regulated and fixed by the figures on the scale.

The lens may be used for: Portraits, studies in the nude, costume studies.

Focal length		Size of plate sharply covered at full aperture		Prices (ordinary mount)	Diameter of lens hood	
in.	cm	in.	cm		in.	mm
12	30	8 ¹ / ₂ × 6 ¹ / ₂	16 × 21	\$ 190.—	3 ⁵ / ₁₆	84,5
14 ¹ / ₄	36	9 ¹ / ₂ × 7	18 × 24	240.—	3 ¹³ / ₁₆	97,5
16 ¹ / ₂	42	10 × 8	21 × 27	295.—	4 ⁹ / ₁₆	116
19	48	12 × 10	26 × 31	340.—	5	127,5

"COLLINEAR" F/6.3

A Double-Anastigmat for all general photographic work with an average luminosity and a large angle.

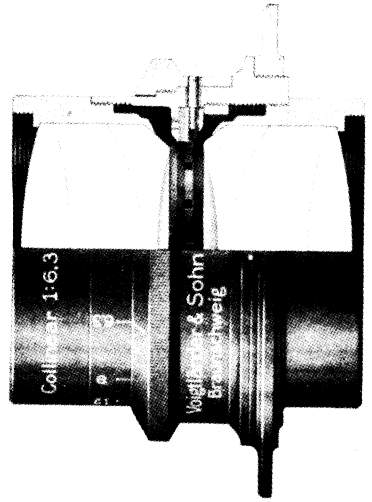
Critical sharpness and flat field.

Perfect definition.

Lenses up to 8" focus with an angle of 80°, lenses of 10" focus and more with an angle of 70°.

The lens may be used for:

Technical subjects / architecture / landscapes groups and portraits / enlargements.



Focal length		Size of plate sharply covered				Prices in		Compur shutter No.	Diameter of hood	
		at full aperture		stopped down		ordi- nary mount	Compur shutter combined with self-timer			
in.	cm	in.	cm	in.	cm	\$	\$		in.	mm
5 1/4	13,2	5×4	10×13	7×5	13×18	—	65.—	0 norm.	1 1/8	29
6	15	6×4 3/4	12×15	7 7/8×6	15×20	55.—	75.—	I. norm.	1 9/32	32,5
6 1/2	16,5	6 1/2×4 3/4	12×16 1/2	8 1/2×6 1/2	16×21	60.—	80.—	I. R. 3	1 7/16	36,8
7 1/8	18	7×5	13×18	9 1/2×7	18×24	66.—	90.—	I. R. 3	1 7/16	36,8
8	20	8×6	15×20	10×8	21×27	70.—	10 2.50	II. R. 4 II	1 21/32	41,8
10	25	9 1/2×7	18×24	12×10	26×31	85.—	—	II. R. 5	1 27/32	46,9
12	31	12×10	24×30	13 3/4×10 1/8	27×35	115.—	—	III. R. 8*	2 1/4	56,9
14 1/2	37	13 3/4×10 1/2	27×35	15×12	30×40	165.—	—	IV. R. 10*	2 23/32	69
17 1/2	44	15×12	30×40	18×13 1/2	35×45	230.—	—	—	3 5/16	84,5

* = Compound shutter

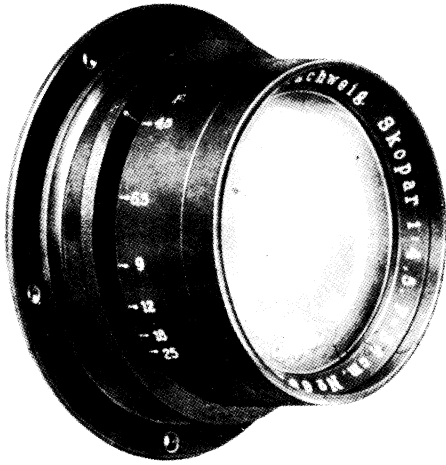
Wide-Angle "Collinear" F/12.5. Special wide angle Double-Anastigmat.

Critical sharpness and flat field. Angle 100° (stopped down).

The lens may be used for: Machinery and technical subjects, architecture and interiors.

Focal length		Size of plate sharply covered				Prices (ordinary mount)	Diameter of lens hood	
		at full aperture		stopped down				
in.	cm	in.	cm	in.	cm		in.	mm
4 1/8	10,5	4 3/4×3 1/2	9×12	6 1/2×4 3/4	12×15	\$ 35.—	1 3/16	21
4 3/4	12	6 1/2×4 3/4	12×16	8×6	15×20	35.50	1 3/16	21
6	15	7×5	13×18	10×8	21×26	40.—	1 1/8	29
7 1/8	18	9 1/2×7	18×24	12×10	24×30	42.—	1 1/8	29
8	20	10×8	21×26	12×10	26×31	50.—	1 7/16	36,8
10	25	12×10	24×30	15×12	30×40	66.—	1 21/32	41,8

Voigtlander



A New Low Priced Anastigmat
for
Professional Photographers

VOIGTLÄNDER SKOPAR F/4.5

The Skopar F/4.5 lens produces negatives that are ideal for enlargements.

They are sharply and clearly defined so that no details are lost.

They have snap and brilliance such as cannot be obtained from most lenses of equal aperture.

The Skopar lens is suitable both for portraits as well as general all-around photography.

In the short focal lengths, the lenses are so constructed that they will fit right into Graflex cameras without special fittings.

COMBINATION

Four Lens System, Semi-Cemented, Unsymmetrical

Equivalent Focus in in.	Focal length in cm.	Size of plate covered with stop F/4.5	Price of lens in Iris Barrel	Price of lens in Compound shutters
5½	13.5		\$27.50	\$38.50
6½	16.5		38.50	57.50
7	18		44.—	65.—
8¼	21	5×7	55.—	71.50
9⅞	24	6½×8½	81.—	99.—
12	30	8×10	113.—	137.50
14	36	10×12	165.—	180.—

(In Universal shutter)

Accessories for Voigtländer Cameras

for Vag, Avus and Tourist models

Size	Focussing panel	Slides	Bellows
3 1/2" x 2 1/2"	\$3.—	\$—.35	\$2.50
9 x 12 cm roll-film	3.50	—.35	3.—
5 1/2" x 3 1/2"	4.—	—.35	4.—
10 x 15	4.50	—.35	4.—

Bellows for Rollfilm models, Bessa and Jubilar

Size	Rollfilm	Bessa	Jubilar
3" x 2"	\$2.—	—	—
3 1/4" x 2 1/4"	2.—	\$2.—	\$1.50
4 1/4" x 2 1/2"	2.50	2.—	—
5 1/2" x 3 1/4"	3.—	—	—

Reducing Kits

9 x 12 to 4 1/4 x 3 1/4 for adapter \$—.35

9 x 12 to 4 1/4" x 3 1/4" for holder —.20

FOCAL PLANE SHUTTER

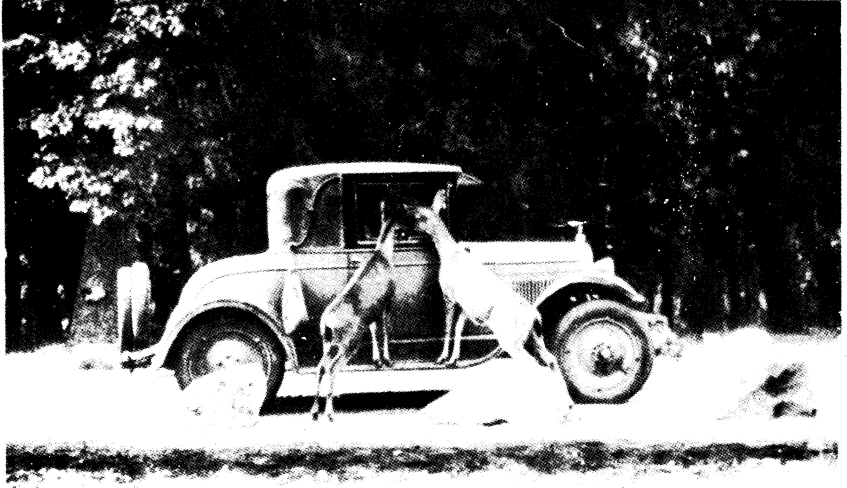
This separate self-capping shutter with adjustable slit and tension, giving speeds up to 1/1000th sec., fits the back of all Voigtländer plate cameras, i. e. takes the place of the ground glass screen while the screen or plate holder is inserted in the back of the shutter. The price includes an extra focussing scale.

For 3 1/2" x 2 1/2" (6.5 x 9 cm)	Prices \$	30.—
For 4 1/4" x 3 1/4" (or 9 x 12 cm)		32.50
For 5 1/2" x 3 1/2" (or 10 x 15 cm)		32.50

For F/4.5 Heliar and F/6.3 Collinear lenses

Flanges	Focus	Lens Caps
\$1.25	7 1/8" (18 cm)	\$—.75
1.50	8 1/4" (21 cm)	—.90
2.—	9 1/2" (24 cm)	1.25
3.50	12" (30 cm)	2.—
4.50	14 1/4" (36 cm)	2.50
5.—	16 1/2" (42 cm)	3.50
6.—	19" (48 cm)	4.—
7.50	24" (60 cm)	5.—

Voigtländer



"Curiosity"

Taken by Fred G. Korth, Chicago. With a Voigtländer Skopar F/4.5